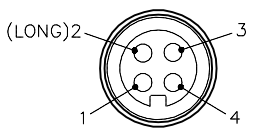
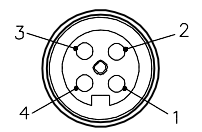
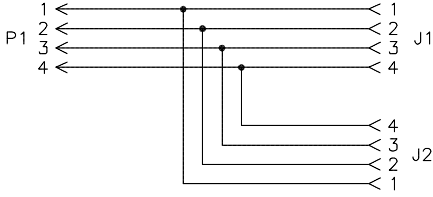
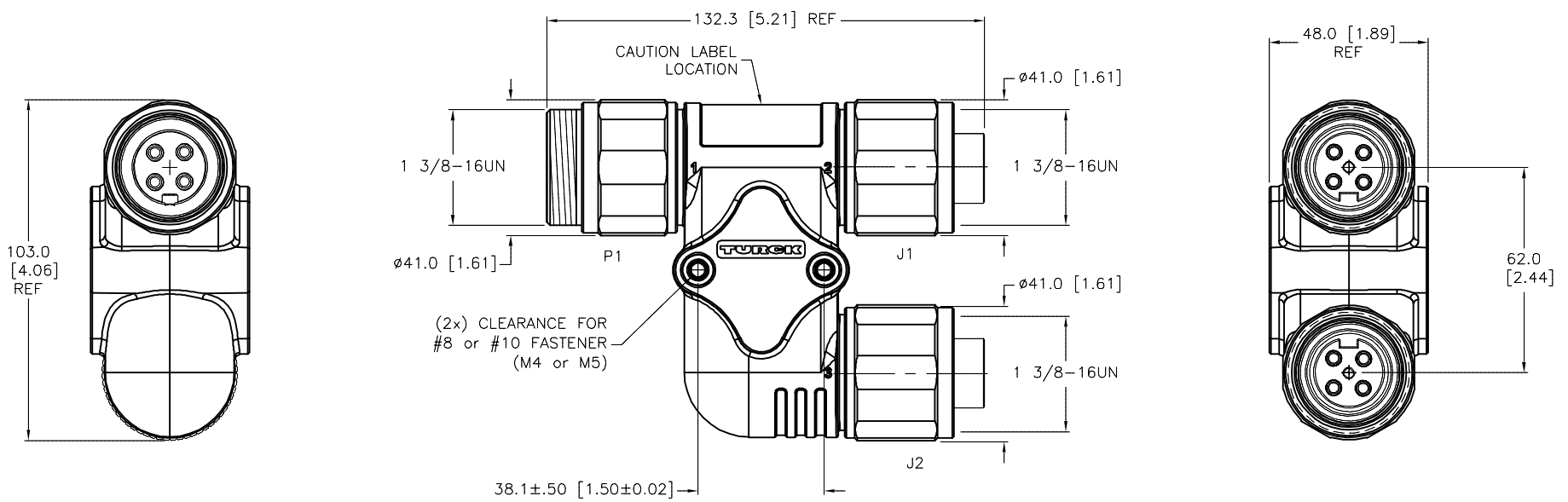

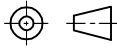


MALE END VIEW	FEMALE END VIEW	WIRING DIAGRAM	SPECIFICATIONS	
			CONTACT CARRIER MATERIAL	PVC
			MOLDED HEAD MATERIAL/COLOR	PVC/BLACK
			CONTACT MATERIAL/PLATING	BRASS or COPPER/GOLD
			COUPLING NUT MATERIAL/FINISH	STAINLESS STEEL/PASSIVATED
			RATED CURRENT [A]	25 A
			RATED VOLTAGE [V]	600 VAC
			TEMPERATURE RANGE	-40°C to +90°C (-40°F to +194°F)
			PROTECTION CLASS	MEETS NEMA 1,3,4,6P AND IEC IP67, IP68, IP69K



SOURCE DRAWING - FOR REFERENCE ONLY

**CAUTION:**
RISK OF ELECTRICAL SHOCK
DO NOT DISCONNECT UNDER LOAD

<div><div><div><div>!</div></div><div>CAUTION:</div></div><div>RISK OF ELECTRICAL SHOCK</div><div>DO NOT DISCONNECT UNDER LOAD</div></div>					RELATED DOCUMENTS		3RD ANGLE PROJECTION		<div>THIS DRAWING IS CONFIDENTIAL AND THE PROPERTY OF TURCK INC. USE OF THIS DOCUMENT WITHOUT WRITTEN PERMISSION IS PROHIBITED.</div> <div></div> <div>3000 CAMPUS DRIVE MINNEAPOLIS, MN 55441 1-800-544-7769 (763) 553-7300 (763) 553-0708 fax www.turck.us</div>					
					1.	2.	3.	4.						
					MATERIAL		<div>ALL DIMENSIONS DISPLAYED ON THIS DRAWING ARE FOR REFERENCE ONLY</div> <div>CONTACT TURCK FOR MORE INFORMATION</div>		DRFT	KMY	DATE	04/30/13	DESCRIPTION P-PWR-SH-GSDV/2GKDV 40	
					SEE SPECIFICATIONS				APVD	M.B.	SCALE	1=2.0		
FINISH		SEE SPECIFICATIONS		UNIT OF MEASUREMENT			IDENTIFICATION NO.		REV					
				MILLIMETER [INCH]			U2-20602		C					
					DO NOT SCALE THIS DRAWING			FILE: U2-20602		SHEET 1 OF 1				
C	UPDATED CURRENT RATING			ER	01/16/20	75560								
REV	DESCRIPTION			BY	DATE	ECO NO.								